

10th International Symposium on Fish Endocrinology

Invitation to Baltimore, Maryland USA

September 15-19, 2024

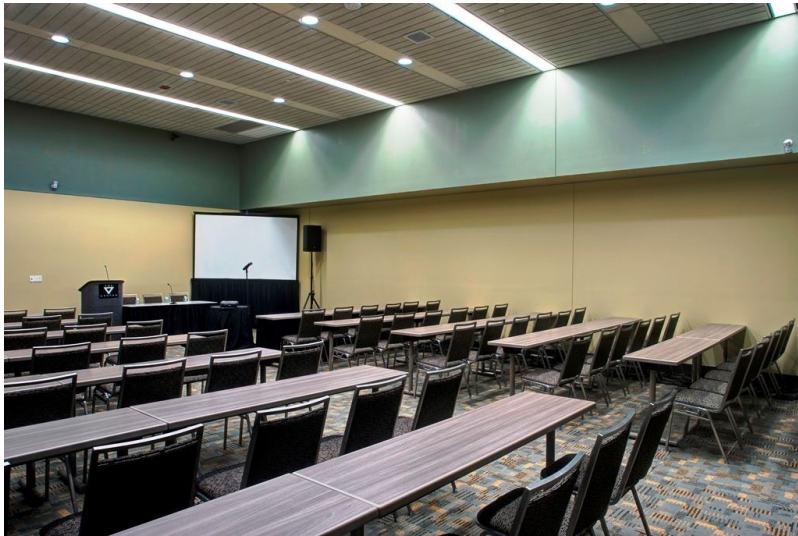
Organizers: Nilli Zmora, Yonathan Zohar, Ten-Tsao Wong

Inner harbor of Baltimore



Venue: Baltimore Convention Center





The Baltimore Convention Center

All filters (1)

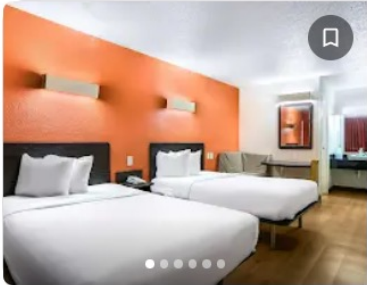
Under €100

Property type

Offers

Guest rating

Hotel class



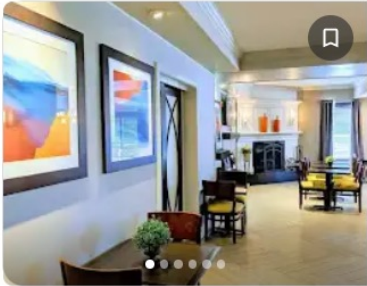
Rodeway Inn Baltimore - Inner Harbor South

€58

2.3 ★ (302)

- 2-star hotel
- Wi-Fi
- Free parking
- Air conditioning
- Pet-friendly
- Breakfast
- Bar
- Restaurant
- Golf

View prices



Wingate by Wyndham Baltimore BWI Airport

€91

3.4 ★ (511)

- 3-star hotel
- Free breakfast
- Free Wi-Fi
- Free parking
- Air conditioning
- Fitness centre
- Restaurant
- Airport shuttle
- Golf

View prices

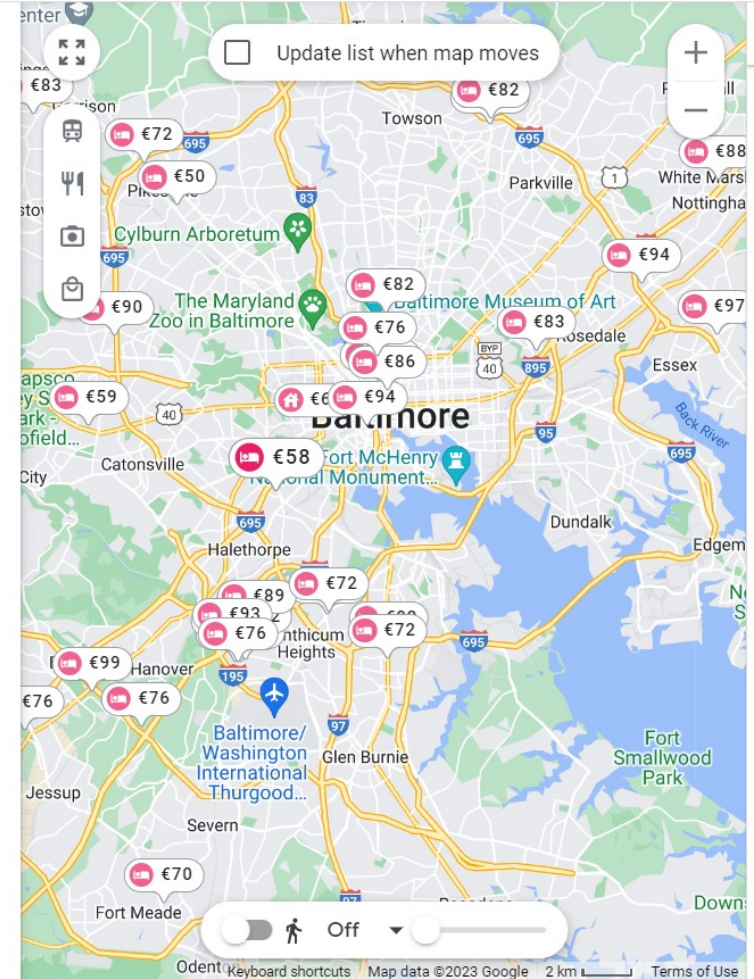


DoubleTree by Hilton Baltimore - BWI Airport

€97

4.0 ★ (1,883) · Eco-certified

- 3-star hotel
- Breakfast (\$)
- Free Wi-Fi
- Free parking
- Outdoor pool
- Air conditioning
- Pet-friendly
- Fitness centre
- Bar



Reception and Symposium Dinner

**Institute of Marine and Environmental
Technology (IMET), University of
Maryland**



What to do in Baltimore: Food, Edgar Allen Poe, historical sites and sports

The famous Maryland crabs:



Fort McHenry and the Stars Spangles Anthem



Neighborhoods



Baltimore Orioles



Two parallel sessions:

1. Hypothalamic regulation of pituitary function
2. Steroid/thyroid receptor structure and function
3. Endocrine regulation of feeding/metabolism, reproduction and growth
4. Paracrine and autocrine control of hormone secretion and function
5. Signal transduction
6. Endocrine aspect of behavior
7. Endocrine control of ion balance and osmoregulation
8. Sex determination and gonadal differentiation
9. Endocrine disruptors and ecotoxicity
10. Molecular endocrinology of stress in fish
11. Endocrine control of development and developmental endocrinology
12. Functional genomics in fish
13. Translational endocrinology
14. Integrative action and cross-talk between hormones